



**Digital Brochure 2017**  
Pool Coping and Fountains



# Pool Coping and Fountains

## About Our Products

D.C. Kerckhoff Company started over 45 years ago as a manufacturer and installer of Cast Stone Pool Coping and has produced and shipped Copings, Grating, Fountains, Bowls, Backsplash Tiles and Pavers throughout the US and the Caribbean ever since. We offer both catalog items and custom designs in over 100 colors and in a wide variety of finishes. Color matched grout available. We manufacture standard and custom pool & spa coping profiles as well as various widths of Zero Entry Grate and Infinity Edge Coping.

We include custom Clean Outs in our designs and detailed layout drawings on every project. Job site templating is also available by one of our trained staff. We can also provide pavers for your pool deck to complement the design.

All our products are cast with a high density, mildew resistant 6500 psi mix design using white cement as the base. Thus all of our products, regardless of pigment, stay cool to the touch. Color and finish samples can be requested through our website or by calling our office.



# Pool Coping and Fountains

## Coping and Fountain Options



### POOL COPING

Since 1972 DC Kerckhoff has been manufacturing radius and straight coping to finish pools in all profile types. Templating is available on all radius pools.

#### BULLNOSE

Any of the Traditional profiles from simple full bullnose to slim line and medium line. These can be cast with a Finger Grip near the water's edge.

#### MODERN

Our new and popular profile with or without a chamfered edge. In Acid Wash, Smooth or Light Texture.

### SPA COPING

Complement your pool area finishes with a Double Bullnose or Square Edge Coping.

### GRATING

Keep a consistent look on your pool beam with our color and finish matched Cast Stone Grating. Available in many widths.

### CENTER SLOT DRAIN

Our efficient design for allowing the water to drain to the gutter quickly with a consistent waterline look.

### CLEAN OUTS

We offer both custom cleanouts in our grating and color and finish matched Pour-a-Lid cleanouts for Skimmers and within solid copings.

### FOUNTAINS

Let your imagination run free with our highly customizable CAD/CAM forming techniques for bowls and pedestals. We offer free quotes on any design.



**D.C. Kerckhoff Company**  
**[www.kerckhoffstone.com](http://www.kerckhoffstone.com)**

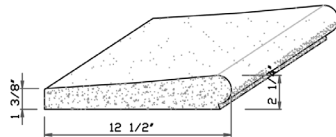
**1901 Elsa Street, Naples, Florida, 34109**  
**Tel: (239) 597-7218 | Fax: (239) 566-8432**



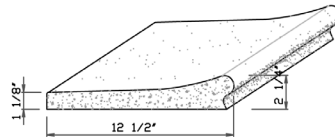


# Pool Coping and Fountains

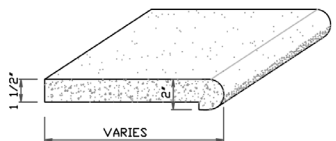
## Pool Coping



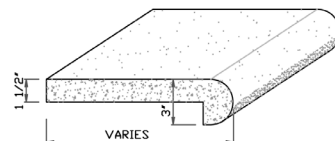
MEDIUM LINE



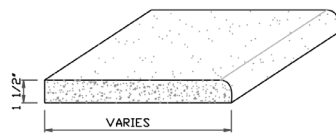
SLIM LINE



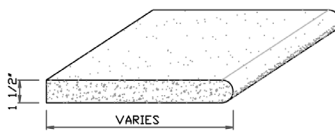
2" BULLNOSE



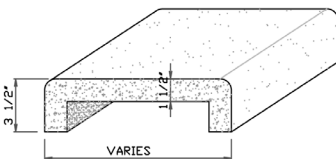
3" BULLNOSE



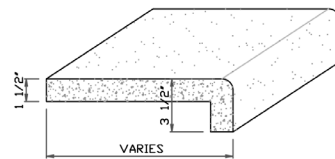
EASED EDGE



BULLNOSE



" U "

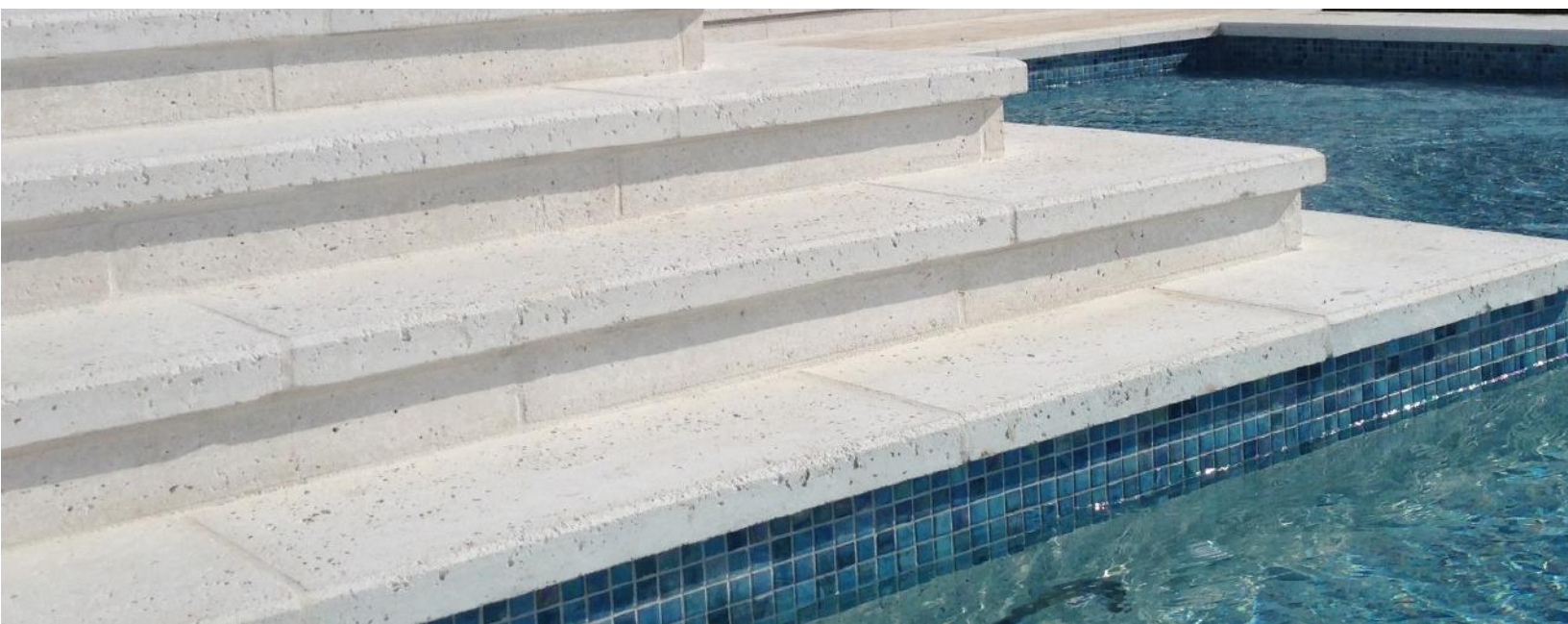


" L "

Since 1972, DC Kerckhoff Company has been manufacturing high quality standard and custom pool coping for residential and commercial projects. We ship from Texas to New England and all over the Caribbean.

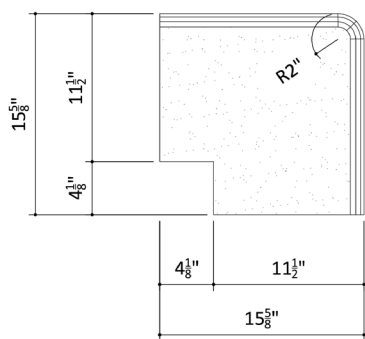
Our copings are available in all the standard profiles shown here and also in simple square edged profiles shown on subsequent pages. DC Kerckhoff provides free estimates with a detailed take off to verify quantities. Before manufacturing begins on your project we provide a 6" square color and finish tile for approval and detailed layout drawings with beam sections showing the installation details. Field templating and color matched buckets of grout are also available.

Call our office for a free quote today! All we need are basic dimensions and a layout drawing if available.

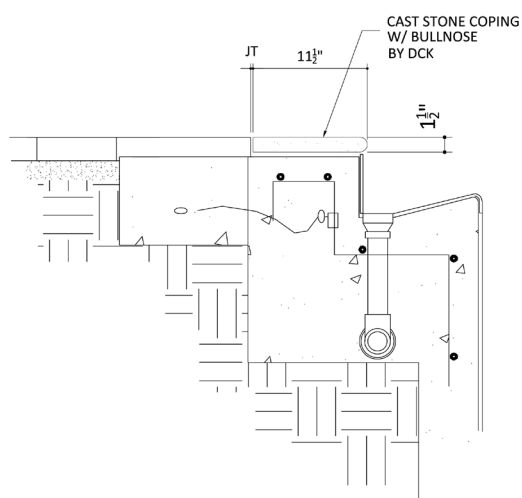


# Pool Coping and Fountains

## Traditional Coping with Bullnose



3 PLAN - OUTSIDE CORNER  
1 1/2" = 1'-0"



2 POOL SECTION  
1 1/2" = 1'-0"

Our most popular coping profile, available in any width and thicknesses of 1", 1 1/2" and 2" as standards. Custom thicknesses are also available.

Our coping can be water jet incised with depth markers and other signage. Lettering tile can also be inset into the coping units.

Coping is available in any radius or straight. All corners are shop manufactured for durability.



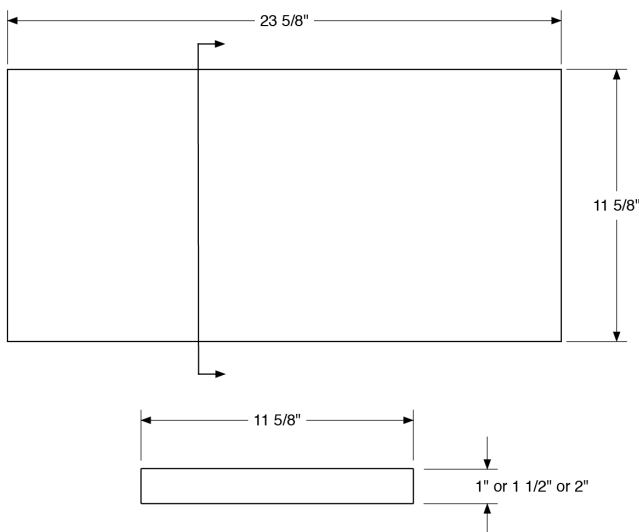
**D.C. Kerckhoff Company**  
[www.kerckhoffstone.com](http://www.kerckhoffstone.com)  
 1901 Elsa Street, Naples, Florida, 34109  
 Tel: (239) 597-7218 | Fax: (239) 566-8432





# Pool Coping and Fountains

## Modern Square Edge Coping



**SQUARE EDGE COPING**

For a clean modern design profile, specify DC Kerckhoff Company's Square Edge Coping. Available in any width and 3 standard thicknesses, our coping is the perfect way to finish the beam edge of a modern residential or commercial pool.

Available in straight sections and any radius. Field templating available for projects in Florida. Pair this profile with our white colors or cool greys to complement your modern palette.

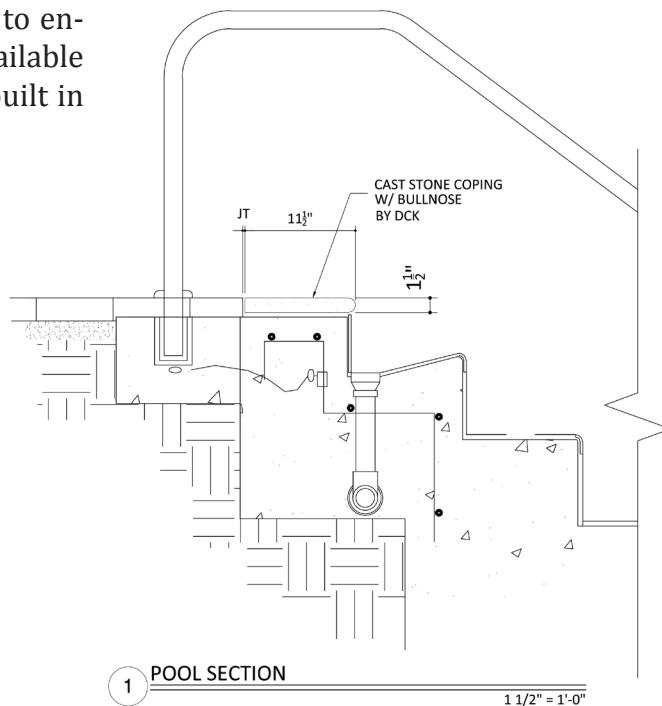
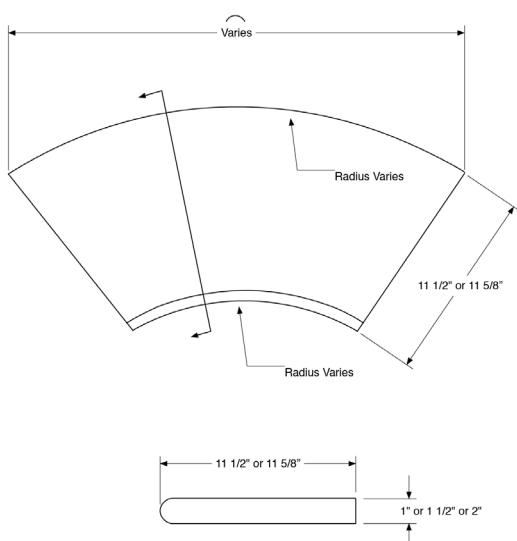
Add DC Kerckhoff Company Pool Deck Pavers for a seamless look. All copings and pavers are 6500 psi and manufactured from a white cement base to improve color fastness and in order to remain cool to the touch.

# Pool Coping and Fountains

## Spa Coping



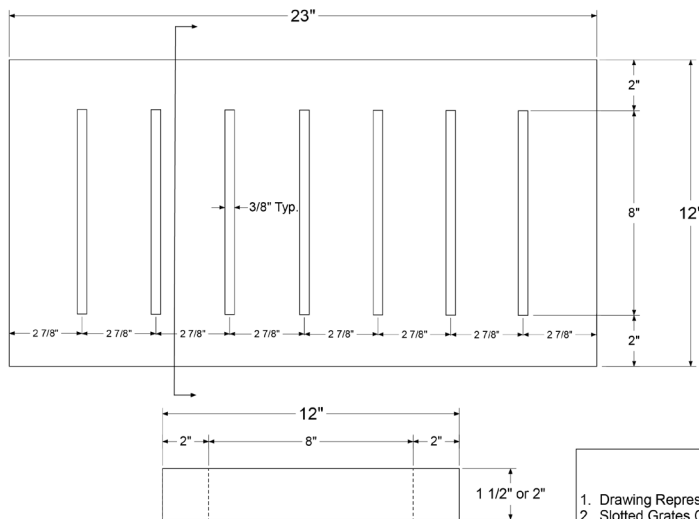
Specify Kerckhoffstone Square Edge or Bullnose Coping to enhance the look of any residential or commercial spa. Available in any of our colors or finishes. Available with durable built in Skimmer Covers to match the color of the coping.



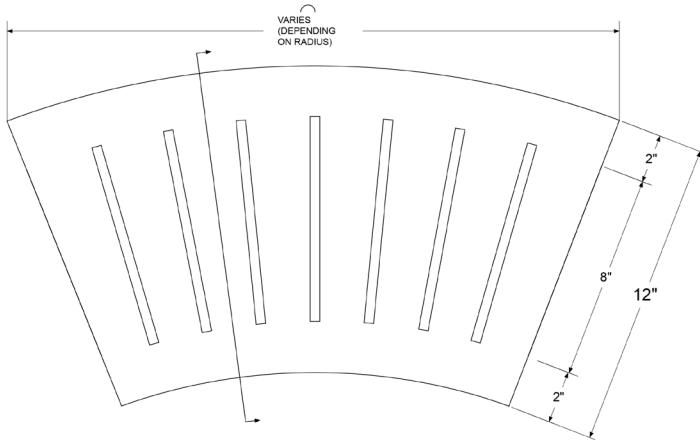
**D.C. Kerckhoff Company**  
[www.kerckhoffstone.com](http://www.kerckhoffstone.com)  
1901 Elsa Street, Naples, Florida, 34109  
Tel: (239) 597-7218 | Fax: (239) 566-8432



# Pool Coping and Fountains Grating



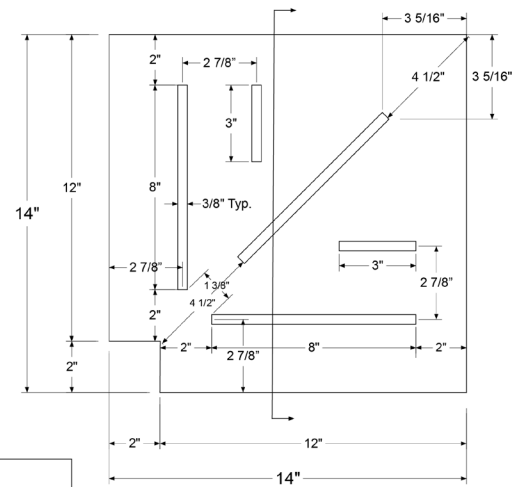
STRAIGHT SLOTTED GRATE



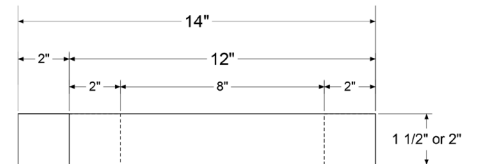
RADIUS SLOTTED GRATE

#### FABRICATION NOTES:

1. Drawing Represents Standard Shape & Sizes
2. Slotted Grates Can be Customized Per Individual Project
3. Slotted Grates can be Fabricated with Radius
4. Width Dimensions Varies from 8" to 18" in Total Slotted Grate Width



INSIDE / OUTSIDE SLOTTED GRATE CORNER



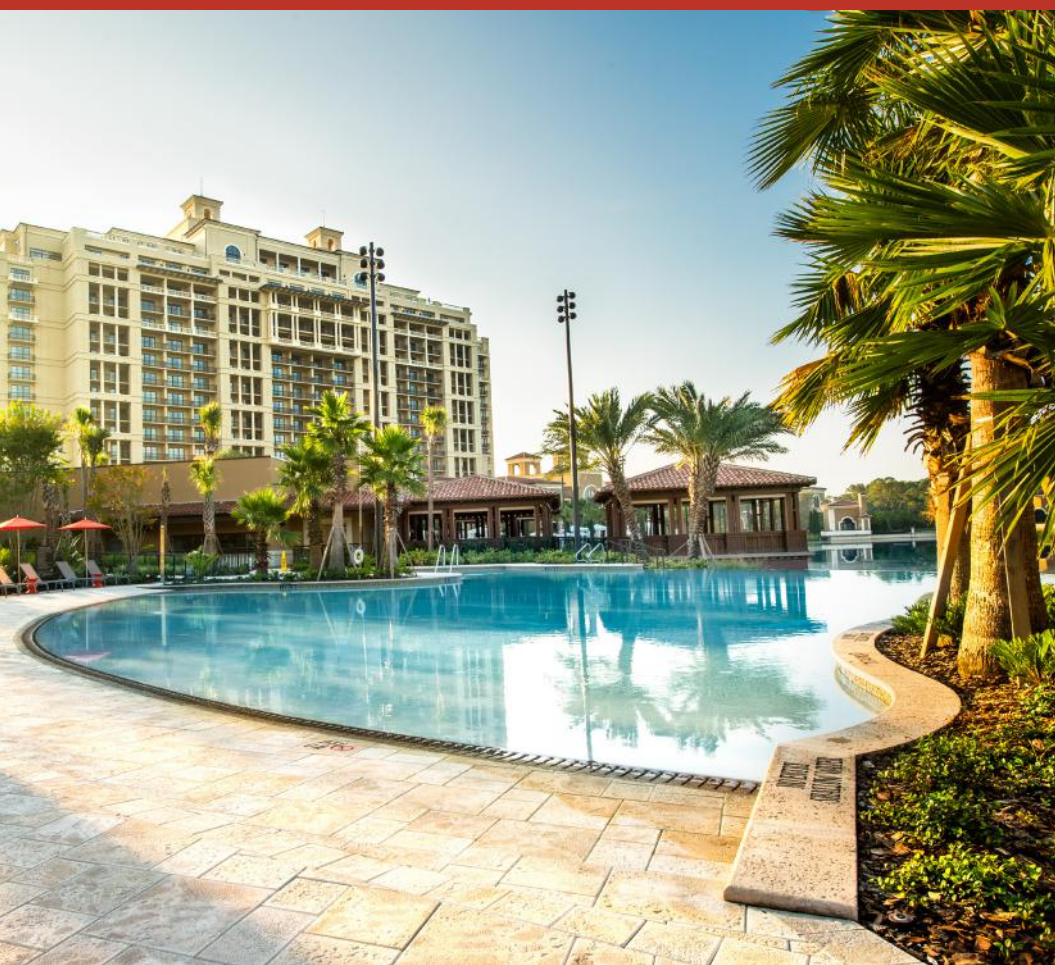
#### NOTES

1. Grate to be 6,000 PSI @ 28 Days
2. Flow Rate Exceeds 1.5 Gal / Second
3. Specification for Cast Stone 04720
4. ASTM C-1364 for Cast Stone
5. Available in over 100 Colors & All Kerckhoffstone Texture
6. Color & Textures will Vary
7. Abrasion and Mildew Resistant

DC Kerckhoff Company offers grating in widths from 8" up to 18". All grating is reinforced to withstand 100 Psf live load assuming 1" bearing on either side. Preferred thickness is 2", though for the smaller widths 1 1/2" thickness is available.



# Pool Coping and Fountains Grating



For zero entry pools, specify Kerckhoffstone Cast Stone Grating. We offer this grating in any of our colors and all of our slip resistant finishes. This grating can be used as a stand-alone feature at the zero entry or as part of a three-piece coping beam section.

We offer radial grating in any radius, with templating available. 90 degree corners are typically designed in the shop drawings phase for added durability.



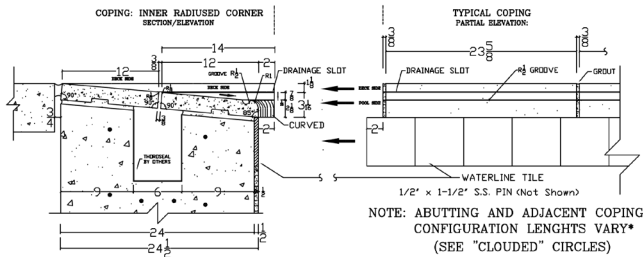
**D.C. Kerckhoff Company**  
[www.kerckhoffstone.com](http://www.kerckhoffstone.com)  
1901 Elsa Street, Naples, Florida, 34109  
Tel: (239) 597-7218 | Fax: (239) 566-8432



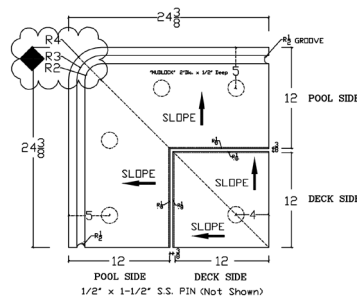


# Pool Coping and Fountains

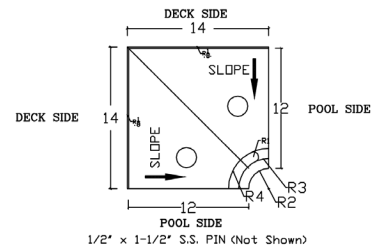
## Center Slot Drain Coping



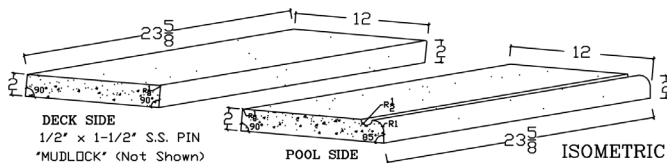
1a/DCK-51 SECTION/ELEVATION  
COPING: INNER RADIUS CORNER TO TYPICAL



3/DCK-51 PLAN VIEW  
COPING: RADIUS CORNER

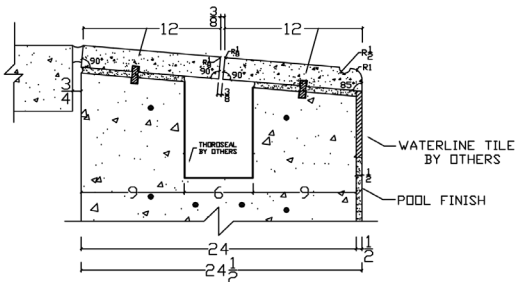


2a/DCK-51 PLAN VIEW  
COPING: INNER RADIUS CORNER



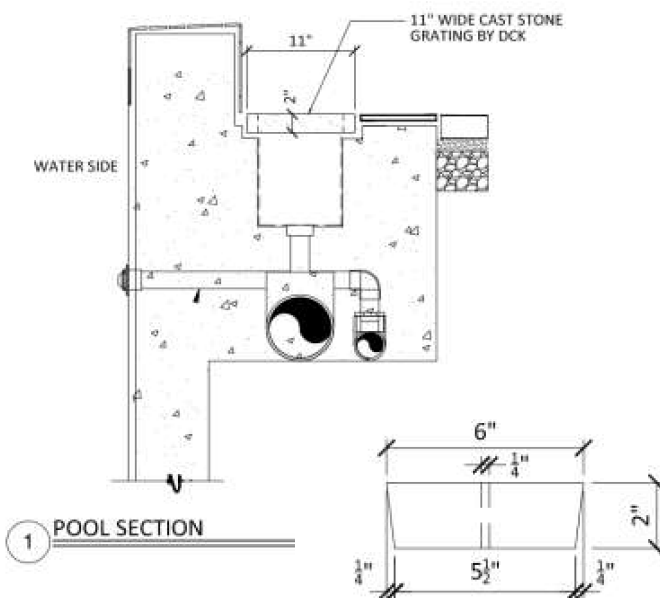
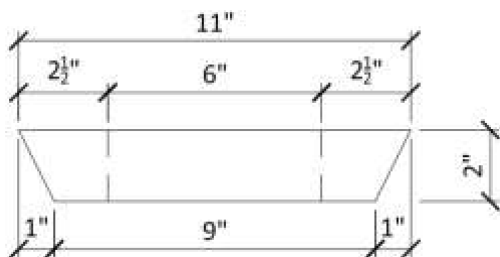
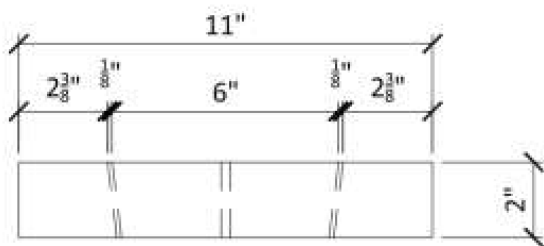
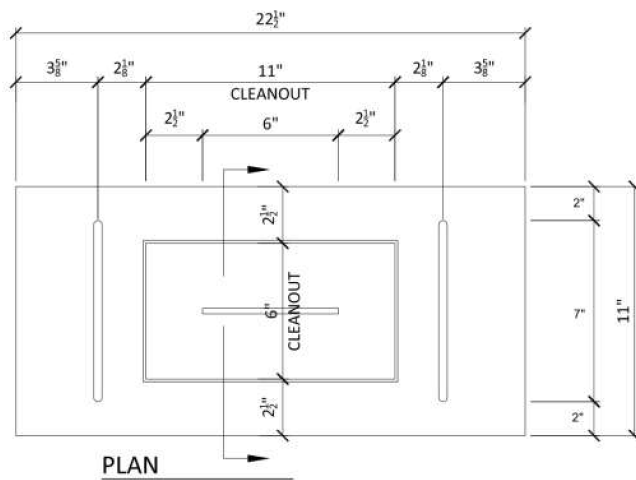
A classic option in lieu of the three-piece coping and grating beam section is the two-piece Kerckhoffstone Center Slot Drain coping. This beam detail includes special clean out pieces that span the full beam section beam allowing easy access to the gutter below.

Clean outs are available for our standard Grating, color and finish matched Pour-a-Lid style and Center Slot Drain design. Available in any color and in all of our non-slip finishes except the Coralstone finish.



# Pool Coping and Fountains

## Clean Outs



**D.C. Kerckhoff Company**  
[www.kerckhoffstone.com](http://www.kerckhoffstone.com)  
 1901 Elsa Street, Naples, Florida, 34109  
 Tel: (239) 597-7218 | Fax: (239) 566-8432





# Pool Coping and Fountains

## Fountains



D.C. Kerckhoff Company is the specified precast manufacturer of choice with many elite landscape architect firms for fountains, water features and hardscapes.

We manufacture custom Bowls, Coping and Cladding for fountains and water features with a portfolio that includes shopping malls, gated community entries, municipalities, hospitality, theme parks and exclusive private residences throughout the US and the Caribbean.





# Pool Coping and Fountains

## Available Finishes and Colors



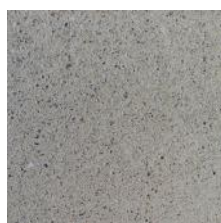
## FINISHES/TEXTURES



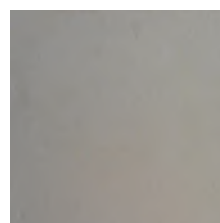
Regular Texture



Light Texture



Acid Wash  
Texture



Smooth Texture



Polished  
Texture



ChiselStone  
Texture



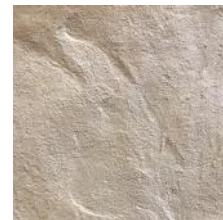
CoralStone  
Texture



ShellCast  
Texture



ShellCast  
Polished Texture



Slate Texture

## UNIQUE COLORS: OLD WORLD COLLECTION



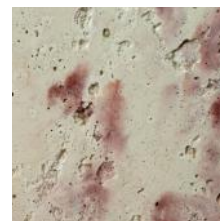
112 - Old World  
Collection: Old  
San Juan



113 - Old World  
Collection:  
Antique Gold



114 - Old World  
Collection:  
Ocean Reef



108 - Old World  
Collection:  
Champion Rose



**D.C. Kerckhoff Company**  
[www.kerckhoffstone.com](http://www.kerckhoffstone.com)

**1901 Elsa Street, Naples, Florida, 34109**  
**Tel: (239) 597-7218 | Fax: (239) 566-8432**



# Pool Coping and Fountains

## Available Colors



89 - Watermark



88 - Watercolor-50



87 - Waterbrock-75



48 - Brockway Green



63 - Charcoal



64 - Smoke



22 - Dolphin



16 - Tarpon



95 - 5 Points Grey



3 - Champion



29 - Longport



45 - Brickel



44 - Bristol



85 - Marco



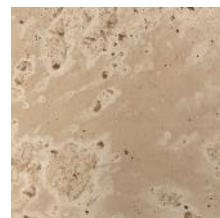
01 - White



77 - Elco



91 - Frenchstone



7 - Villa M



39 - Cay Beige



56 - Rico



23 - Enclave



19 - Riscorp



67 - Steel



04 - Ritz



59 - Bailey



36 - Edison



28 - Paradise



69 - Paradox



10 - Cappuccino



10A - Double Cappuccino



# Pool Coping and Fountains

## Available Colors



11 - Chocolate



11A - Double  
Chocolate



26 - Terra Cotta  
Oak



104 - Coastland



79 - Gulfcoast



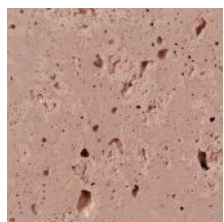
61 - Orchid  
Rose



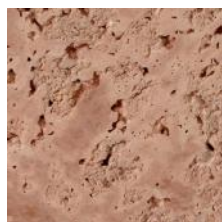
12 - Philhar-  
monic



45 - Brickel



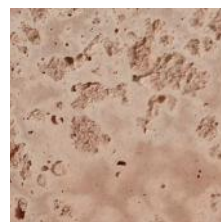
25 - Historic



50 - Brick



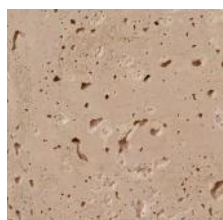
13 - Terramingo



76 - Oceania  
Pink



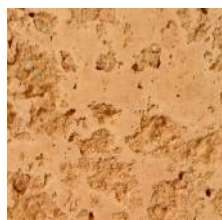
15 - Campbell



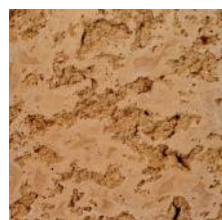
46 - Tower Pink



08 - Peachy  
Cream



90 - Xentury



94 - Terra Cotta  
Mix



09 - Tapas



93 - Sunset Mex



47 - Nassau



51 - Red Roman



52 - Roman



33- Swan



49 - Raspberry



**D.C. Kerckhoff Company**  
**[www.kerckhoffstone.com](http://www.kerckhoffstone.com)**

**1901 Elsa Street, Naples, Florida, 34109**  
**Tel: (239) 597-7218 | Fax: (239) 566-8432**



