



Digital Brochure 2017

Stonecast Pavers and Treads



Stonecast Pavers and Treads

About Our Pavers

DC Kerckhoff offers both pavers and hardscape materials for commercial and residential projects throughout the US and the Caribbean.

DC Kerckhoff Company has been producing beautiful and durable Kerckhoffstone pavers for over 40 years. We have a semi automated paver line that allows us to manufacture a high volume of handmade pavers on a daily basis.

We offer a variety of sizes, thicknesses, colors and finishes. We offer linear pavers and vehicular traffic rated pavers.

All of DC Kerckhoff Hardscape materials are handmade to exacting tolerances, with in-house computerized concrete batching to ensure consistency and quality.

We offer over 100 standard colors and a wide variety of finishes such as Keystone or Acid Washed in each color. Color and finish samples can be requested through our website or by calling our office.



Stonecast Pavers and Treads

Stonecast Paver Options



LINEAR PAVERS

For the modern, running bond application at pool decks or driveways, specify Kerckhoffstone Linear Pavers. Either sand set or set in a mortar bed. Available in vehicular rated thickness.

LARGESCALE PAVERS

Sometimes called Stepping Stones, these large pavers can be used together on a walkway or individually with grass or plantings separating them.

TRADITIONAL PAVERS

Our top selling sizes, including 24" square and 12" square, nominally. Can be set in many patterns and a mixture of colors and borders or accent tile colors.

ASHLAR PAVERS

We offer a four size and five size ashlar pattern for your large commercial application or for a residential patio or driveway.

TREADS AND RISERS

We offer Square Edge, Bullnose Edge, or our Embassy Tread profile. Kerckhoffstone treads can be up to 60" long and are offered on radial stairs as well as straight runs.



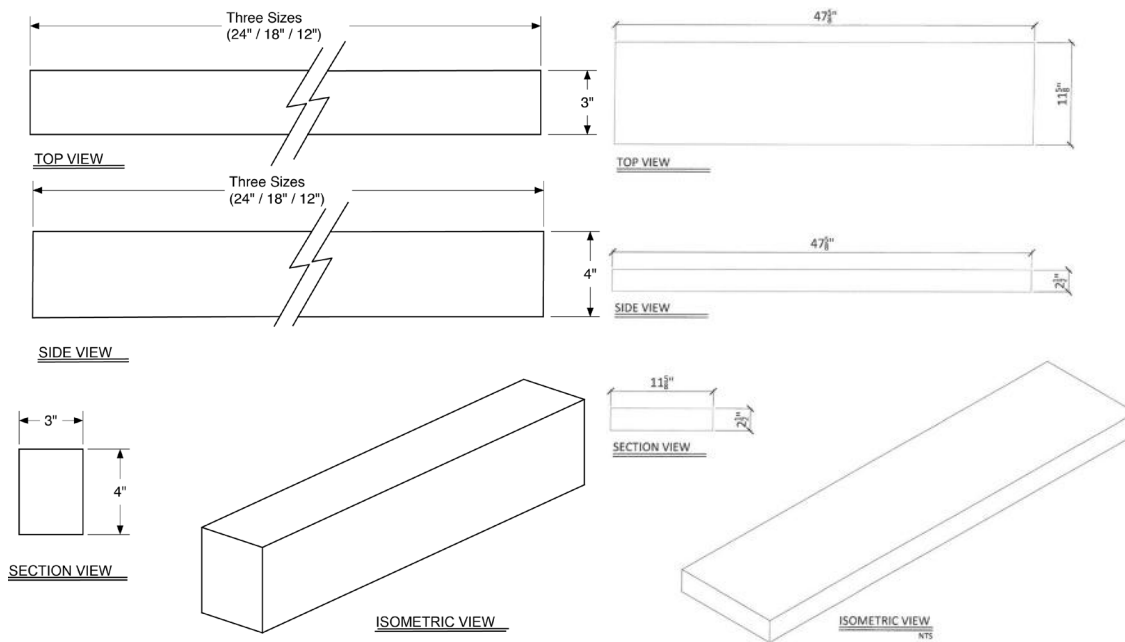
D.C. Kerckhoff Company
www.kerckhoffstone.com

1901 Elsa Street, Naples, Florida, 34109
Tel: (239) 597-7218 | Fax: (239) 566-8432



Stonecast Pavers and Treads

Linear Pavers



Linear Pavers are available as either Large Linear Pavers or Narrow (Vehicular Rated) Linear Pavers and are available in all Kerckhoffstone colors and both Keystone or Acid wash textures. Kerckhoff Narrow Linear Pavers are perfect for Driveways, Turnarounds and Pathways.

Whether for a pool deck in a running bond pattern or a walkway for a hotel or residence, Kerckhoffstone Linear pavers add a timeless look to any Hardscape.

NARROW LINEAR PAVER SIZES:

3" X 12" X 4" 3" X 18" X 4"
3" X 24" X 4"

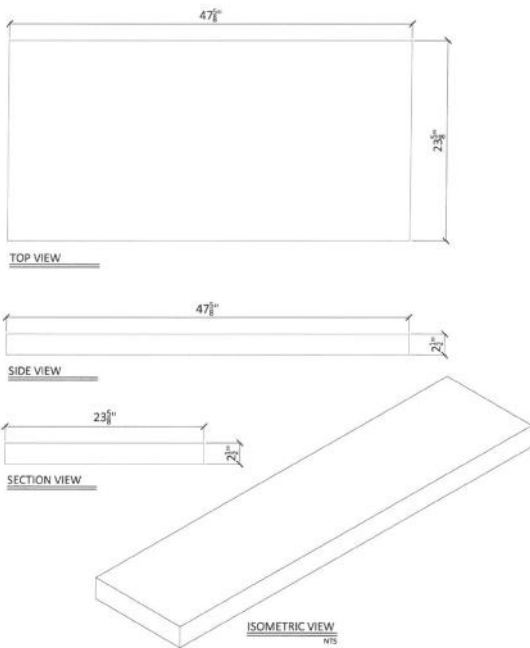
LARGE LINEAR PAVER SIZES:

6" X 12" X 2." 8" X 16" X 2." 12" X 24" X 2." 24" X 36" X 2."
6" X 18" X 2." 8" X 24" X 2." 12" X 36" X 2." 24" X 48" X 2."
6" X 24" X 2." 8" X 36" X 2." 12" X 48" X 2."
6" X 36" X 2."



Stonecast Pavers and Treads

Largescale Pavers



Kerckhoffstone Large Scale pavers are our most customizable paver line. Standard size Large Scale pavers can be produced at a high volume for large commercial projects.

STANDARD LARGE SCALE PAVER SIZES:

18" X 36" X 2 1/2"
24" X 48" X 2 1/2"
30" X 30" X 2 1/2"
36" X 36" X 2 1/2"
48" X 48" X 2 1/2"

And we also can create any shape, size, color or texture paver for your project as well. You can let your imagination run free and we will assist you in creating anything from free form stepping stones in a waterway (as shown above) to Large Scale modern squares in a lawn that can withstand vehicular traffic. These pavers are perfect for creating easy and maintenance free walkways in a lawn or garden.



D.C. Kerckhoff Company
www.kerckhoffstone.com
1901 Elsa Street, Naples, Florida, 34109
Tel: (239) 597-7218 | Fax: (239) 566-8432



Stonecast Pavers and Treads

Traditional Pavers



For over 40 years, DC Kerckhoff Company has manufactured high strength, durable pavers in Naples, FL and shipped them all over the US and Caribbean.

We are able to make our traditional pavers with a Keystone finish to simulate natural coral stone of Florida. These are available in a variety of sizes and we can mix pallets with colors and sizes to make a full pallet.

11 5/8" X 47 5/8" X 2 1/2"

23 5/8" X 47 5/8" X 2 1/2"

23 5/8" X 11 5/8" X 2"

23 5/8" X 23 5/8" X 2"

11 5/8" x 11 5/8" x 2"

23 5/8" X 11 5/8" X 1 1/2"

5 5/8" X 11 5/8" X 1 1/2"

23 5/8" X 23 5/8" X 1 1/2"

15 5/8" X 15 5/8" X 1 1/2"

11 5/8" X 11 5/8" X 1 1/2"

17 5/8" X 17 5/8" X 1 1/2"

23 5/8" X 23 5/8" X 1"

15 5/8" X 15 5/8" X 1"

23 5/8" X 11 5/8" X 1"

17 5/8" X 17 5/8" X 1"

11 5/8" X 11 5/8" X 1"

5 5/8" X 5 5/8" X 1"

3 5/8" X 3 5/8" X 1"

11 5/8" X 11 5/8" X 3/4"



Stonecast Pavers and Treads

Traditional Pavers



23 5/8" X 11 5/8" X 2"



23 5/8" X 23 5/8" X 2"



23 5/8" X 11 5/8" X 1 1/2"



23 5/8" X 23 5/8" X 1 1/2"



23 5/8" X 11 5/8" X 1 1/2"
Bullnose



23 5/8" X 23 5/8" X 1 1/2"
Bullnose



23 5/8" X 11 5/8" X 1"



23 5/8" X 23 5/8" X 1"



17 5/8" X 17 5/8" X 1 1/2"



17 5/8" X 17 5/8" X 1 1/2"
Bullnose



17 5/8" X 17 5/8" X 1"



15 5/8" X 15 5/8" X 1 1/2"



15 5/8" X 15 5/8" X 1 1/2"
Bullnose



15 5/8" X 15 5/8" X 1"



11 5/8" X 11 5/8" X 1 1/2"



11 5/8" X 11 5/8" X 1 1/2"
Bullnose



11 5/8" X 11 5/8" X 1"



11 5/8" X 11 5/8"
X 3/4"



5 5/8" X 5 5/8" X 1"



3 5/8" X 3 5/8" X 1"



We also offer our pavers with a full bullnose edge on one, two, or three sides. The available sizes for traditional pavers with bullnose included are:

23 5/8" X 11 1/2" X 1 1/2" w/BULLNOSE
23 5/8" X 23 1/2" X 1 1/2" w/BULLNOSE
17 5/8" X 17 1/2" X 1 1/2" w/BULLNOSE
15 5/8" X 15 1/2" X 1 1/2" w/BULLNOSE
11 5/8" X 11 1/2" X 1 1/2" w/BULLNOSE

Kerckhoff Traditional pavers can be laid in a square, running bond, diagonal, herringbone or random pattern. We can help you create the layout that works best for your room, lanai, pool deck, patio, driveway or walkway.



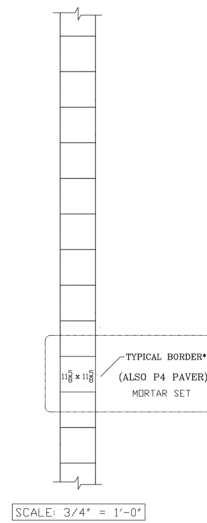
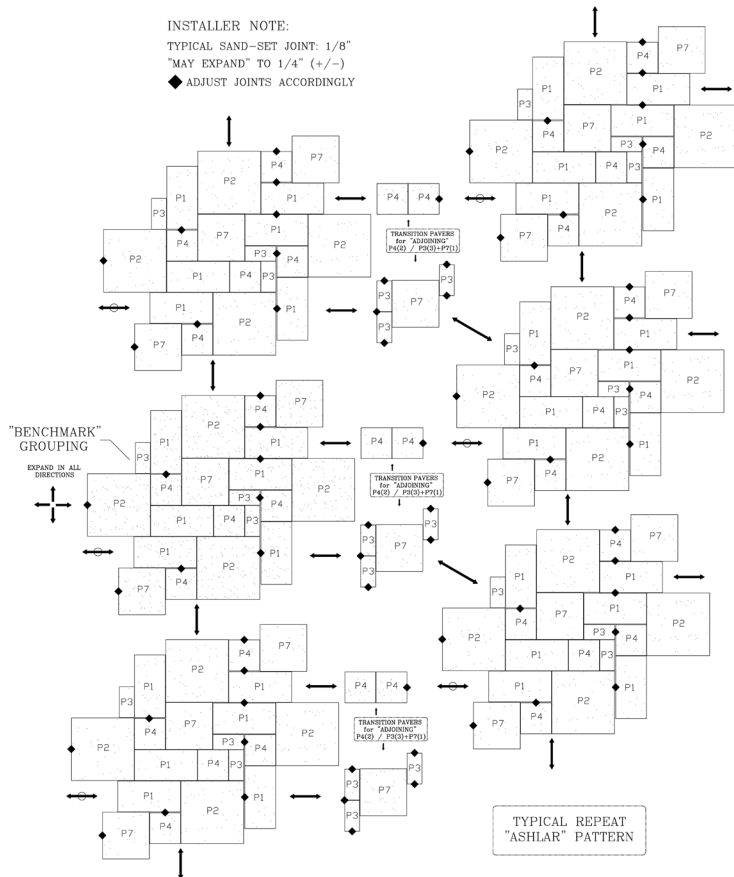
D.C. Kerckhoff Company
www.kerckhoffstone.com

1901 Elsa Street, Naples, Florida, 34109
Tel: (239) 597-7218 | Fax: (239) 566-8432



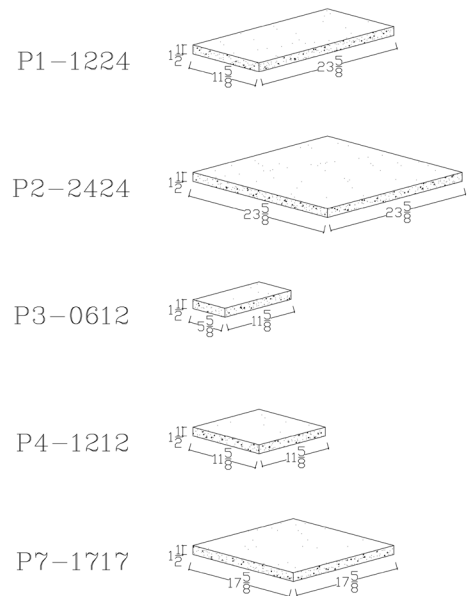
Stonecast Pavers and Treads

Ashlar Pavers



*INSTALLER NOTE:
"FIELD-CUT" for PERIMETER
EDGE JOBSITE CONDITIONS

CUSTOM COLOR: #112
FINISH: Light Texture



P27 - CAST STONE "ASHLAR" PAVERS
- ISOMETRIC -

SCALE: 1-1/2" = 1'-0"



Stonecast Pavers and Treads

Ashlar Pavers



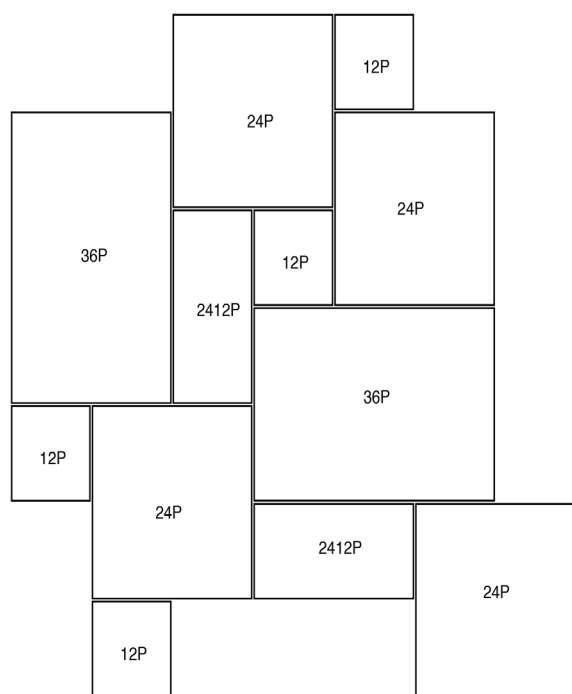
Coverage Area

36P - (35-5/8" x 23-5/8" Paver) = 33% Coverage

24P - (23-5/8" x 23-5/8" Paver) = 44% Coverage

2412P - (23-5/8" x 11-5/8" Paver) = 12% Coverage

12P - (11-5/8" x 11-5/8" Paver) = 11% Coverage



DC Kerckhoff Company offers a five size and a four size Ashlar Pattern paver. Our Four Seasons Five Size Ashlar Paver Layout (pictured opposite page) and our Four Size French Pattern Ashlar Paver Layout.

We can assist you with a layout that works best for your site and offer free budgeting for owners and designers.



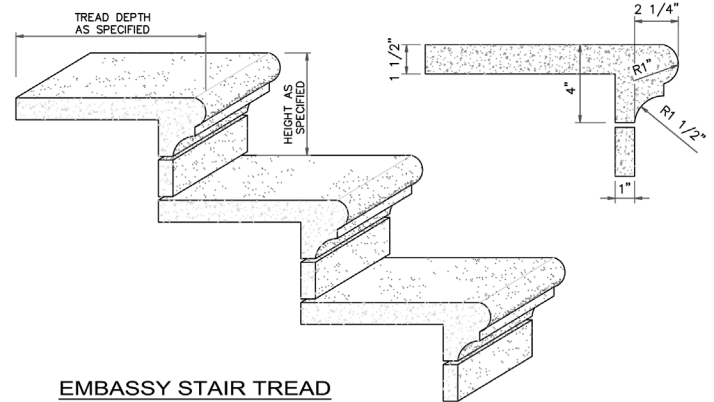
D.C. Kerckhoff Company
www.kerckhoffstone.com

1901 Elsa Street, Naples, Florida, 34109
Tel: (239) 597-7218 | Fax: (239) 566-8432

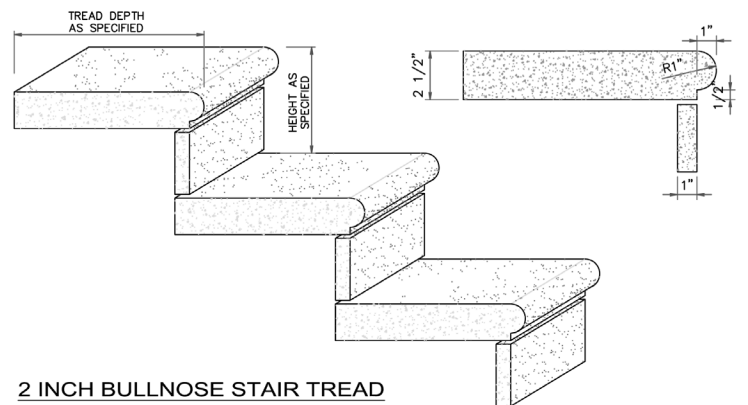


Stonecast Pavers and Treads

Treads and Risers



EMBASSY STAIR TREAD



2 INCH BULLNOSE STAIR TREAD



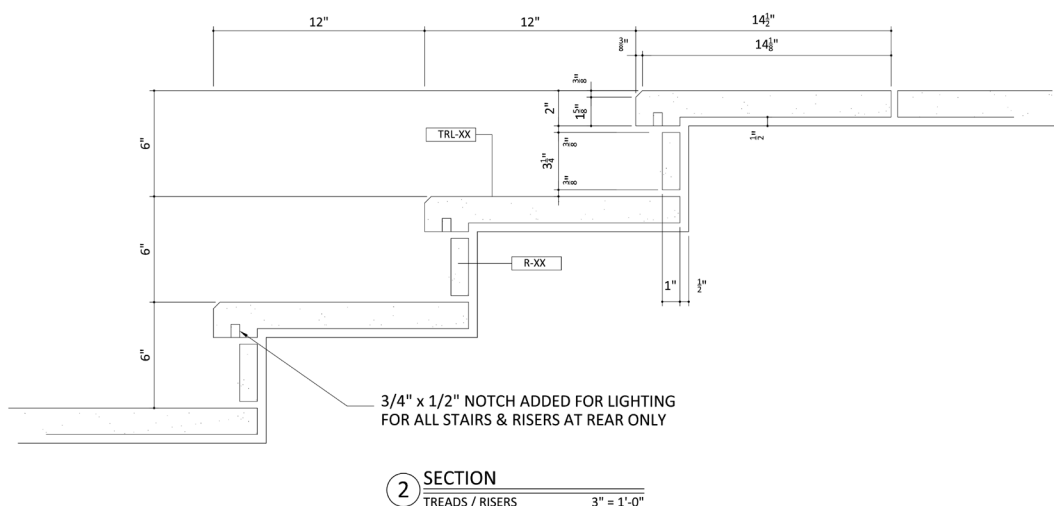
Complement your Kerckhoffstone Stonecast Paver area with Stair Treads and risers.

These can form a lovely contrasting colored border, or highlight a change in elevation in multiple decks. We offer many styles from traditional bullnose treads to modern chamfered and square edge treads. All our treads and risers are available in any of our colors and either our acid wash or keystone textures to assure slip resistance.

Kerckhoffstone treads can be cast with insets on the underside leading edge to accept LED strip lighting for a dramatic entrance to your building or to illuminate a walkway. Treads can be cast with integral risers for a modern look as well.

Stonecast Pavers and Treads

Modern Treads and Risers



D.C. Kerckhoff Company
www.kerckhoffstone.com
1901 Elsa Street, Naples, Florida, 34109
Tel: (239) 597-7218 | Fax: (239) 566-8432



Stonecast Pavers and Treads Installation

Precast Keystone Kerckhoff Stone Pavers® Design Standard 6,500 P.S.I.

Manufactured by D.C. Kerckhoff Company, 1901 Elsa Street, Naples, Florida. This interior and exterior floor and deck system is available in nominal sizes from 12" squares up to 24" squares, and custom sizes or patterns to meet the requirements of the designer. Design standard is 6,500 P.S.I., in 28 days; and copies of all testing, including freeze thaw, are available upon request.

Installation on a Slab: This floor and deck system should be laid in a minimum 1" deep mortar bed over the slab. The mortar bed should be full. No pads should be allowed. Wet grout may be placed into the joints so it will flow to the bottom of the joint and completely fill the space. Care must be taken not to allow this wet grout to spill onto the surface of the material. The use of dry grout causes bridging and voids unless the grout is worked into the bottom of the joint. Grout joints are very important and it is recommended to use a tooled joint, either flushed or recessed. Kerckhoff Stone Pavers® may be set tight together, or to the design size of 3/8". The architect or owner, in advance of the installation, should establish the type of finish for the grout joint.

Installation on Sand: The exterior deck system may be set on a 2" well compacted bed of sand. Compacting of sand is very important as settling could later occur. The perimeter of the Kerckhoff Stone Pavers® should be set on mortar to prevent erosion, unless otherwise contained. Setting should be tight together or with a maximum of 1/8" space between them. These joints may be filled with fine white sand after installation.

Exposed Edges and Steps: The exposed edges, when specified, can be textured to match the face. These exposed edges can be simple square, bull nose, elaborate, standard or custom shapes. Step details can be with or without risers.

Cleaning and Sealing: The contractor must be very careful to keep the grout off the face of the Kerckhoff Stone Pavers® and especially out of the texture. Wet sponging will work the grout into the product and spoil the finished texture. If spillage occurs, allow the grout to come to initial set and brush off with a non-metallic stiff brush. Sealing is optional. If sealing is specified, care must be taken in the selection and application of the sealer. In all cases samples must be submitted and approved before application to the installed material.

Floor and Deck Protection: After the completed installation is grouted, cleaned and sealed (if required), this finished floor must be protected from all other trades. A non-smearing, non-absorbent building paper or visqueen should be used.

Stonecast Pavers and Treads

Available Finishes and Colors



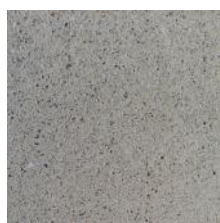
FINISHES/TEXTURES



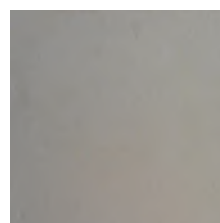
Regular Texture



Light Texture



Acid Wash
Texture



Smooth Texture



Polished
Texture



ChiselStone
Texture



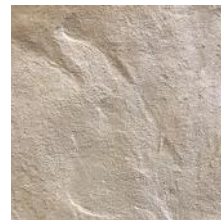
CoralStone
Texture



ShellCast
Texture



ShellCast
Polished Texture



Slate Texture

UNIQUE COLORS: OLD WORLD COLLECTION



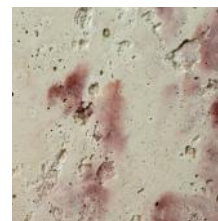
112 - Old World
Collection: Old
San Juan



113 - Old World
Collection:
Antique Gold



114 - Old World
Collection:
Ocean Reef



108 - Old World
Collection:
Champion Rose



D.C. Kerckhoff Company
www.kerckhoffstone.com

1901 Elsa Street, Naples, Florida, 34109
Tel: (239) 597-7218 | Fax: (239) 566-8432



Stonecast Pavers and Treads

Available Colors



89 - Watermark



88 - Watercolor-50



87 - Waterbrock-75



48 - Brockway Green



63 - Charcoal



64 - Smoke



22 - Dolphin



16 - Tarpon



95 - 5 Points Grey



01 - White



44 - Bristol



45 - Brickel



85 - Marco



35 - Lyford



29 - Longport



77 - Elco



3 - Champion



91 - Frenchstone



56 - Rico



39 - Cay Beige



23 - Enclave



19 - Riscorp



67 - Steel



04 - Ritz



59 - Bailey



36 - Edison



28 - Paradise



69 - Paradox



10 - Cappuccino



10A - Double Cappuccino

Stonecast Pavers and Treads

Available Colors



11 - Chocolate



11A - Double
Chocolate



26 - Terra Cotta
Oak



104 - Coastland



79 - Gulfcoast



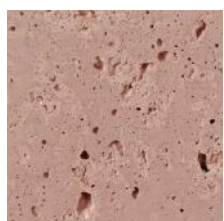
61 - Orchid
Rose



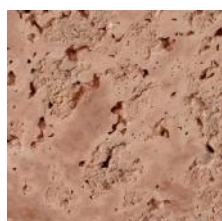
12 - Philhar-
monic



45 - Brickel



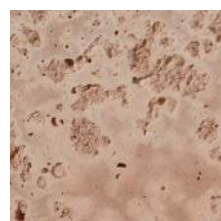
25 - Historic



50 - Brick



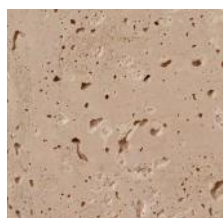
13 - Terramingo



76 - Oceania
Pink



15 - Campbell



46 - Tower Pink



08 - Peachy
Cream



90 - Xentury



94 - Terra Cotta
Mix



09 - Tapas



93 - Sunset Mex



47 - Nassau



51 - Red Roman



52 - Roman



33- Swan



49 - Raspberry



D.C. Kerckhoff Company
www.kerckhoffstone.com

1901 Elsa Street, Naples, Florida, 34109
Tel: (239) 597-7218 | Fax: (239) 566-8432



D.C. Kerckhoff Company
www.kerckhoffstone.com
1901 Elsa Street, Naples, Florida, 34109
Tel: (239) 597-7218 | Fax: (239) 566-8432