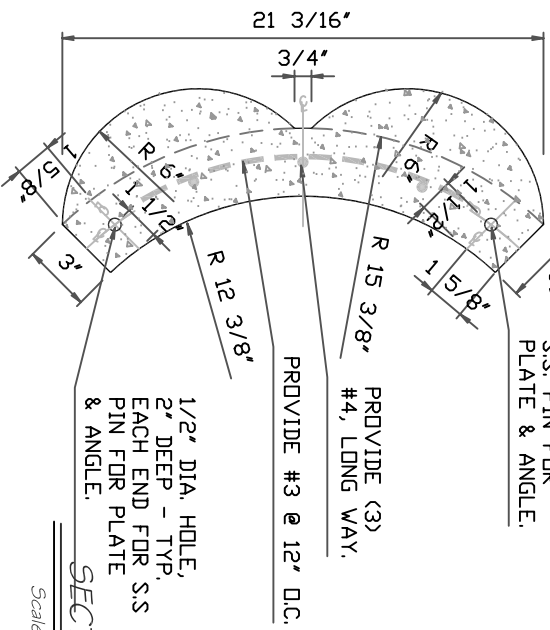


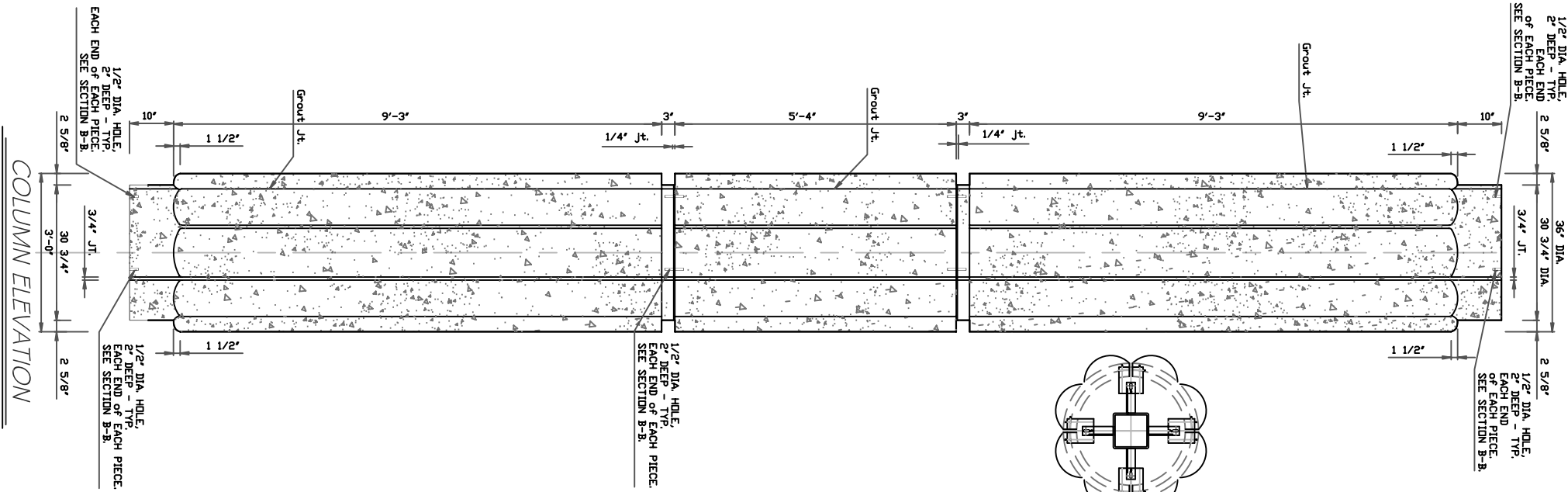
**CONNECTION
DETAIL**

Scale: 3" = 1'-0"



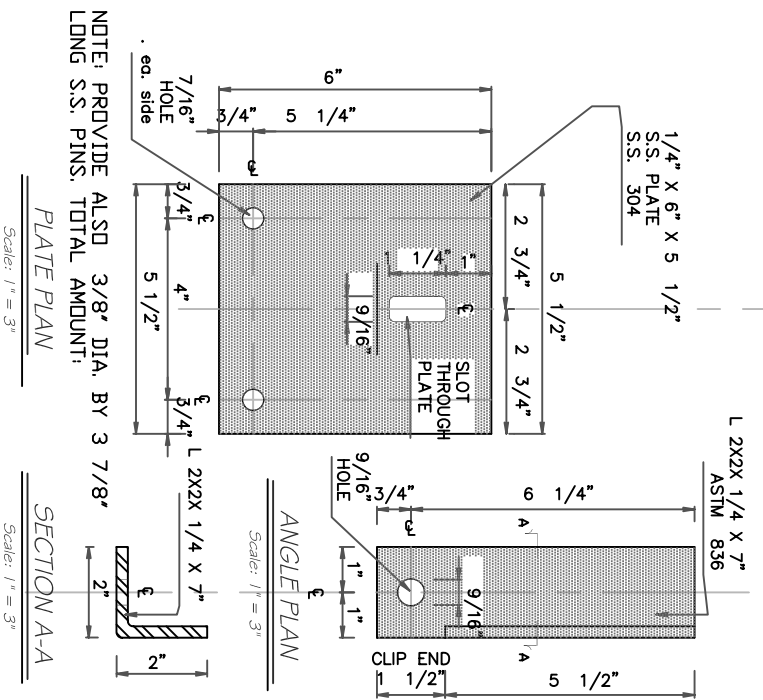
SECTION B-B

Scale: 3" = 1'-0"



COLUMN ELEVATION

Scale: 3/4" = 1'-0"

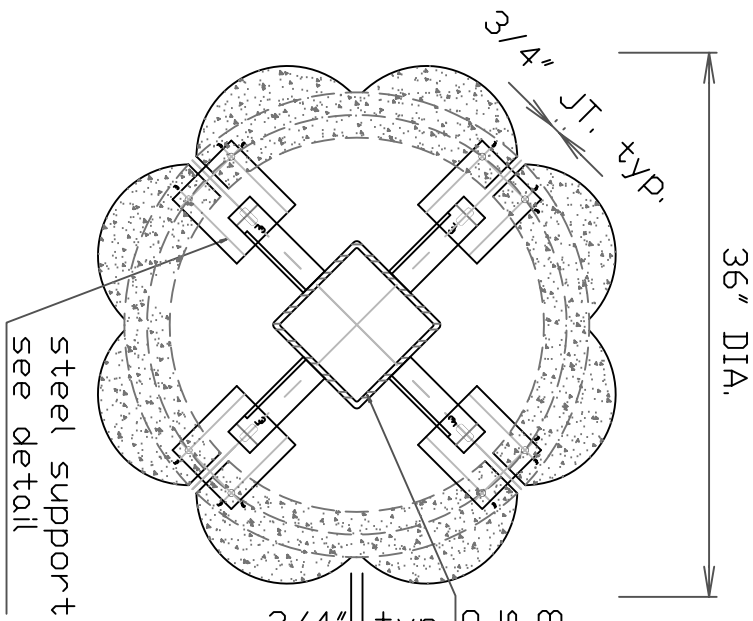


SECTION A-A

Scale: 1" = 3"

ANGLE PLAN

Scale: 1" = 3"

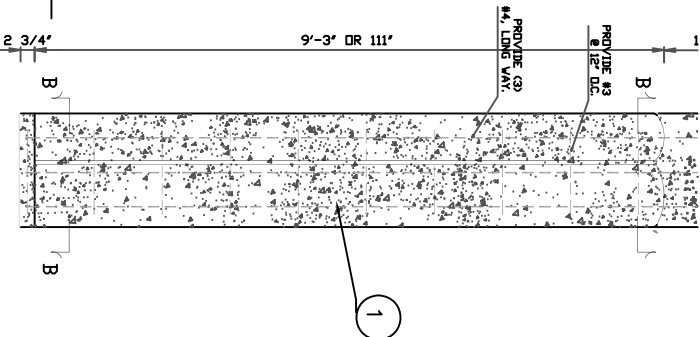


PLAN VIEW

Scale: 2" = 1'-0"

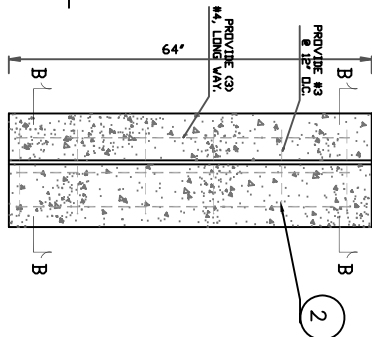
**PIECE 'A'
ELEVATION**

Scale: 3/4" = 1'-0"



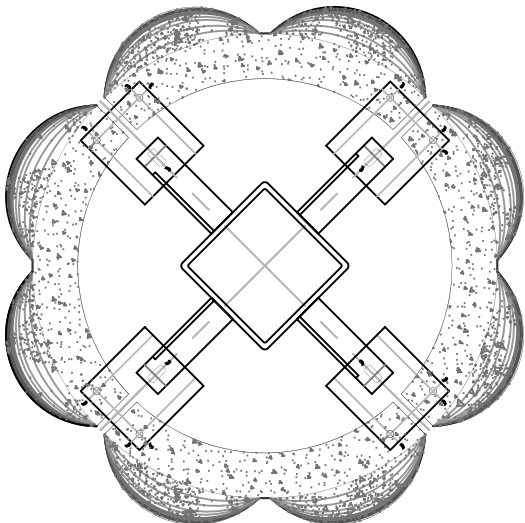
**PIECE 'B'
ELEVATION**

Scale: 3/4" = 1'-0"



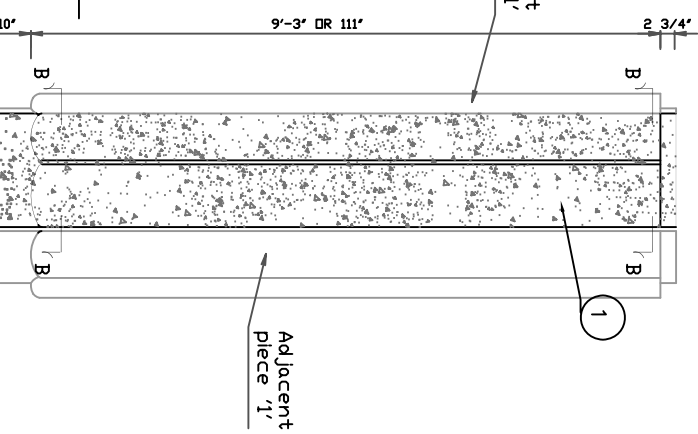
TOP & BOTTOM VIEW '1'

Scale: 2" = 1'-0"



**PIECE 'C'
ELEVATION**

Scale: 3/4" = 1'-0"



SET DESCRIPTION:



© D.C. Kerckhoff
2002

PROJECT NAME:
FLORIDA
GULF COAST
UNIVERSITY

DESCRIPTION:
Entry Columns

QUANTITY:
24 of 1.
12 of 2

PIECE MARK:
1, 2, & 3.

DCK Proj. Mgr.:
R.R.

SHEET NO.:
1 of 1

- NOTES:
1. FINISH: HEAVY HEAVY
 2. COLOR: FLORIDA GULF COAST # 79