



Product Brochure

Stonecast Pavers and Treads



Stonecast Pavers and Treads

About Our Pavers

DC Kerckhoff offers both pavers and hardscape materials for commercial and residential projects throughout the US and the Caribbean.

At DC Kerckhoff Company, we have been producing beautiful and durable Kerckhoffstone pavers for over 45 years. We have a semi automated paver line that allows us to manufacture a high volume of handmade pavers on a daily basis. We offer a variety of sizes, thicknesses, colors and finishes. We offer linear pavers and vehicular traffic rated pavers.

All of DC Kerckhoff Hardscape materials are handmade to exacting tolerances, with in-house computerized concrete batching to ensure consistency and quality. All of our products are cast with a 6500 psi mix design using white cement as the base, thus making all of our pavers regardless of pigment stay cooler to the touch.

We offer over 85 standard colors and a wide variety of finishes such as Keystone or Acid Washed in each color. Color and finish samples can be requested through our website or by calling our office.



Stonecast Pavers and Treads

Stonecast Paver Options



LINEAR PAVERS

For the modern, running bond application at pool decks or driveways, specify Kerckhoffstone Linear Pavers. Either sand set or set in a mortar bed. Available in vehicular rated thickness.

LARGESCALE PAVERS

Sometimes called Stepping Stones, these large pavers can be used together on a walkway or individually with grass or plantings separating them.

TRADITIONAL PAVERS

Our top selling sizes include 24" square and 12" square nominally. These can be set in many patterns and a mixture of colors and borders or accent tile colors.

ASHLAR PAVERS

We offer a three, four and five size ashlar pattern for your large commercial application or for a residential patio or driveway.

TREADS AND RISERS

We offer Square Edge, Bullnose Edge, or our Embassy Tread profile. Our Kerckhoffstone treads can be up to 60" long and are offered on radial stairs as well as straight runs.

STANDARD SPECIFICATIONS

1. 6,500 P.S.I. Design Mix
2. ASTM C-1364 For Cast-Stone
3. Specification for Cast-Stone 04720
4. Available in over 85 colors and all standard KERCKHOFFSTONE Textures
5. Color and texture will vary
6. Abrasion and mildew resistant
7. All oversize thick copings are reinforced as required custom pavers:

******All other square pavers, linear pavers, narrow linear pavers, large linear pavers, and round pavers sizes not shown on the following pages can be manufactured upon request******

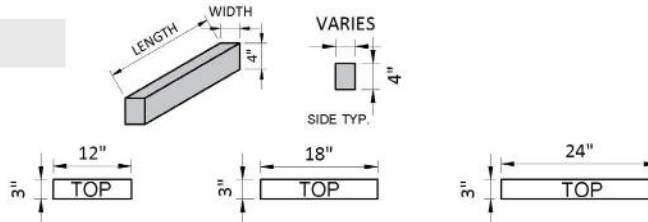


Stonecast Pavers and Treads

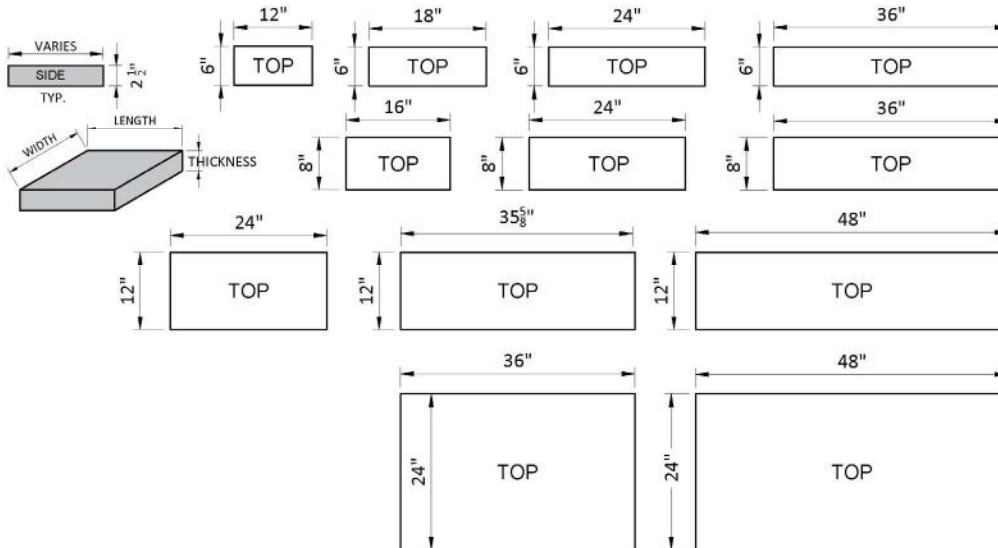
Linear Pavers

NARROW PAVER SERIES

4" THICK PAVERS



2" THICK PAVERS



Linear Pavers are available as either Large Linear Pavers or Narrow (Vehicular Rated) Linear Pavers and are available in all Kerckhoffstone colors and both Keystone or Acid wash textures. Kerckhoff Narrow Linear Pavers are perfect for Driveways, Turnarounds and Pathways.

Whether for a pool deck in a running bond pattern or a walkway for a hotel or residence, Kerckhoffstone Linear pavers add a timeless look to any Hardscape.



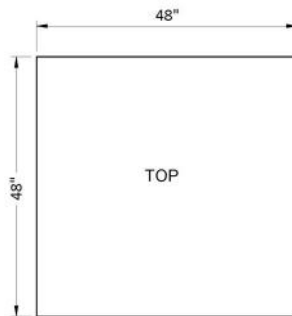
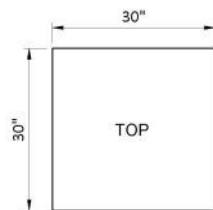
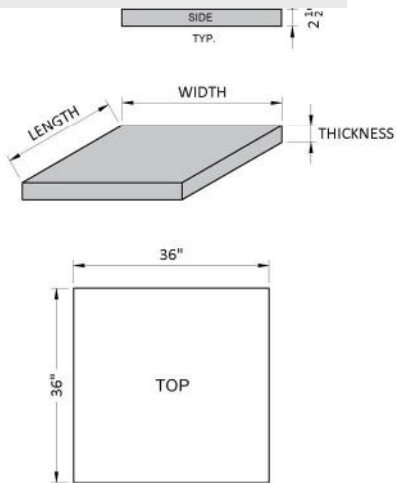
Stonecast Pavers and Treads

Largescale Pavers



LARGE SCALE PAVER SERIES

2 ½" THICK PAVERS



STANDARD LARGE SCALE PAVER SIZES:

18" X 36" X 2 ½"
24" X 48" X 2 ½"
30" X 30" X 2 ½"
36" X 36" X 2 ½"
48" X 48" X 2 ½"

Kerckhoffstone Large Scale pavers are our most customizable paver line. Standard size Large Scale pavers can be produced at a high volume for large commercial projects.

We can also create any shape, size, color or texture paver for your project as well. You can let your imagination run free and we will assist you in creating anything from free form stepping stones in a waterway to Large Scale modern squares in a lawn that can withstand vehicular traffic. These pavers are perfect for creating easy and maintenance free walkways in a lawn or garden.



Stonecast Pavers and Treads

Traditional Pavers



For over 45 years, DC Kerckhoff Company has manufactured high strength, durable pavers in Naples, FL and shipped them all over the US and Caribbean.

We are able to make our traditional pavers with a Keystone finish to simulate natural coral stone of Florida. These are available in a variety of sizes and we can mix pallets with colors and sizes to make a full pallet.

11 5/8" X 47 5/8" X 2 1/2"	23 5/8" X 23 5/8" X 1"
23 5/8" X 47 5/8" X 2 1/2"	15 5/8" X 15 5/8" X 1"
23 5/8" X 11 5/8" X 2"	23 5/8" X 11 5/8" X 1"
23 5/8" X 23 5/8" X 2"	17 5/8" X 17 5/8" X 1"
11 5/8" x 11 5/8" x 2"	11 5/8" X 11 5/8" X 1"
23 5/8" X 11 5/8" X 1 1/2"	5 5/8" X 5 5/8" X 1"
5 5/8" X 11 5/8" X 1 1/2"	3 5/8" X 3 5/8" X 1"
23 5/8" X 23 5/8" X 1 1/2"	11 5/8" X 11 5/8" X 3/4"
15 5/8" X 15 5/8" X 1 1/2"	
11 5/8" X 11 5/8" X 1 1/2"	
17 5/8" X 17 5/8" X 1 1/2"	



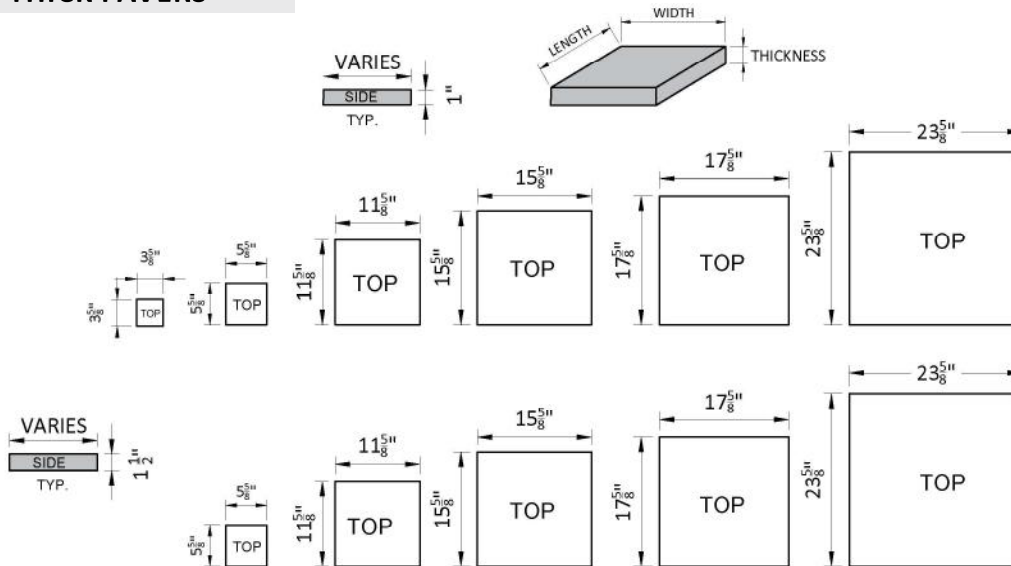
Stonecast Pavers and Treads

Traditional Pavers

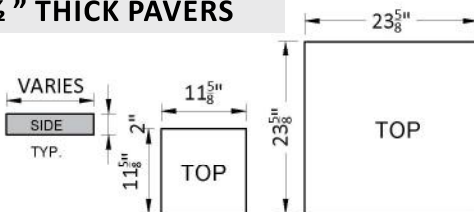


TRADITIONAL PAVER SERIES

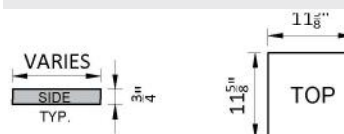
1" THICK PAVERS



1 1/2" THICK PAVERS



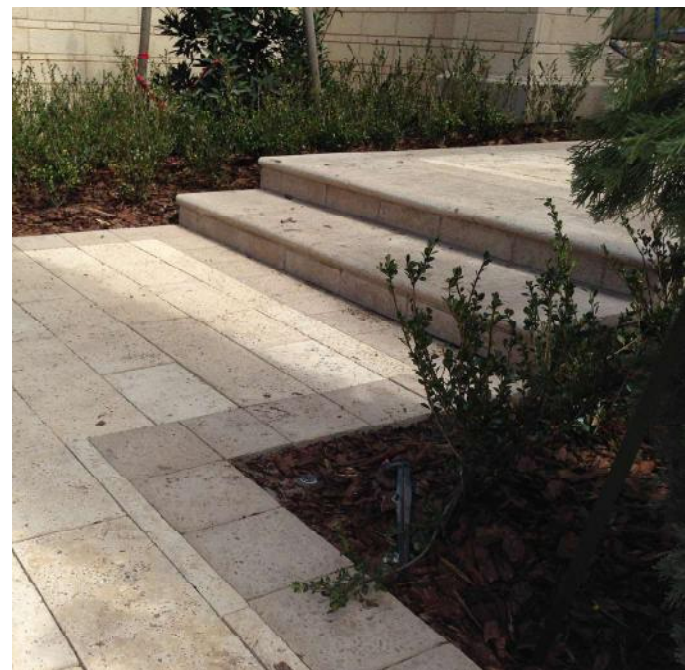
3/4" THICK PAVERS



We also offer our pavers with a full bullnose edge on one, two, or three sides. The available sizes for traditional pavers with bullnose included are:

- 23 5/8" X 11 1/2" X 1 1/2" w/BULLNOSE
- 23 5/8" X 23 1/2" X 1 1/2" w/BULLNOSE
- 17 5/8" X 17 1/2" X 1 1/2" w/BULLNOSE
- 15 5/8" X 15 1/2" X 1 1/2" w/BULLNOSE
- 11 5/8" X 11 1/2" X 1 1/2" w/BULLNOSE

Kerckhoff Traditional pavers can be laid in a square, running bond, diagonal, herringbone or random pattern. We can help you create the layout that works best for your lanai, pool deck, patio, driveway or walkway.



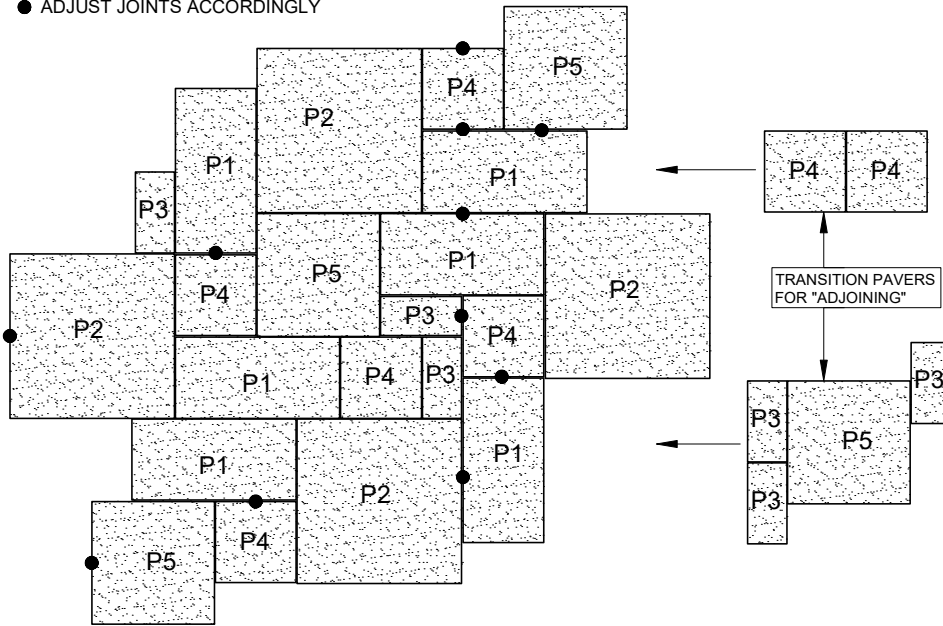


Stonecast Pavers and Treads

Ashlar Pavers

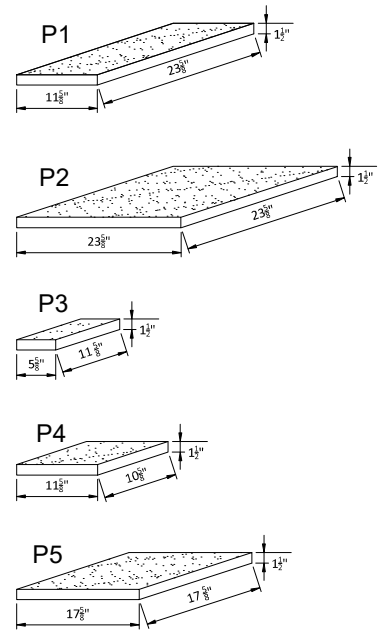
INSTALLER NOTE:
TYP. SAND-SET JOINT $\frac{1}{8}$ "
MAY EXPAND TO $\frac{1}{4}$ " \pm

● ADJUST JOINTS ACCORDINGLY



ASHLAR PATTERN PAVER LAYOUT

SCALE: N.T.S.



ASHLAR PAVERS ISOMETRIC VIEW

SCALE: N.T.S.

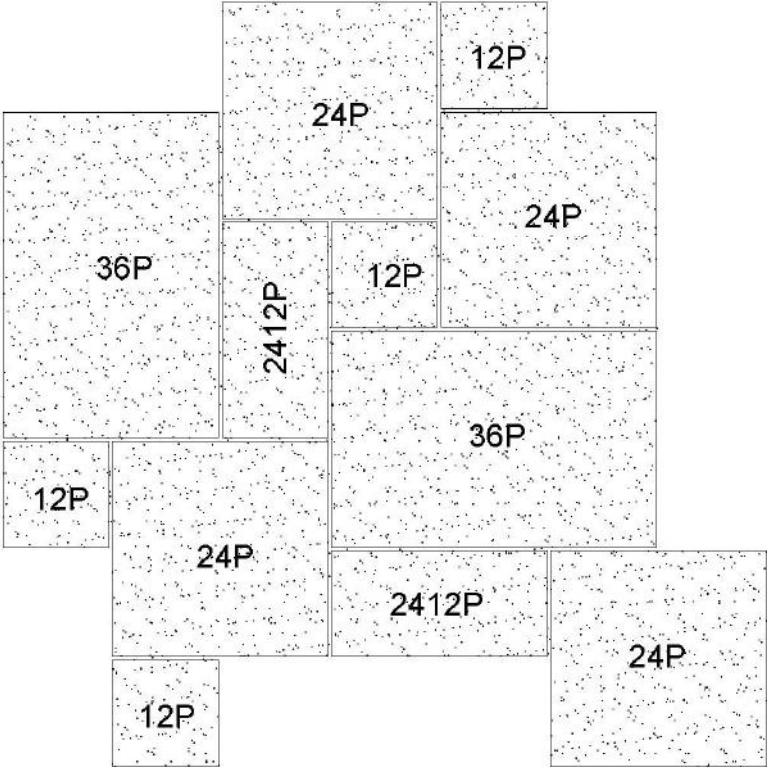


Stonecast Pavers and Treads

Ashlar Pavers



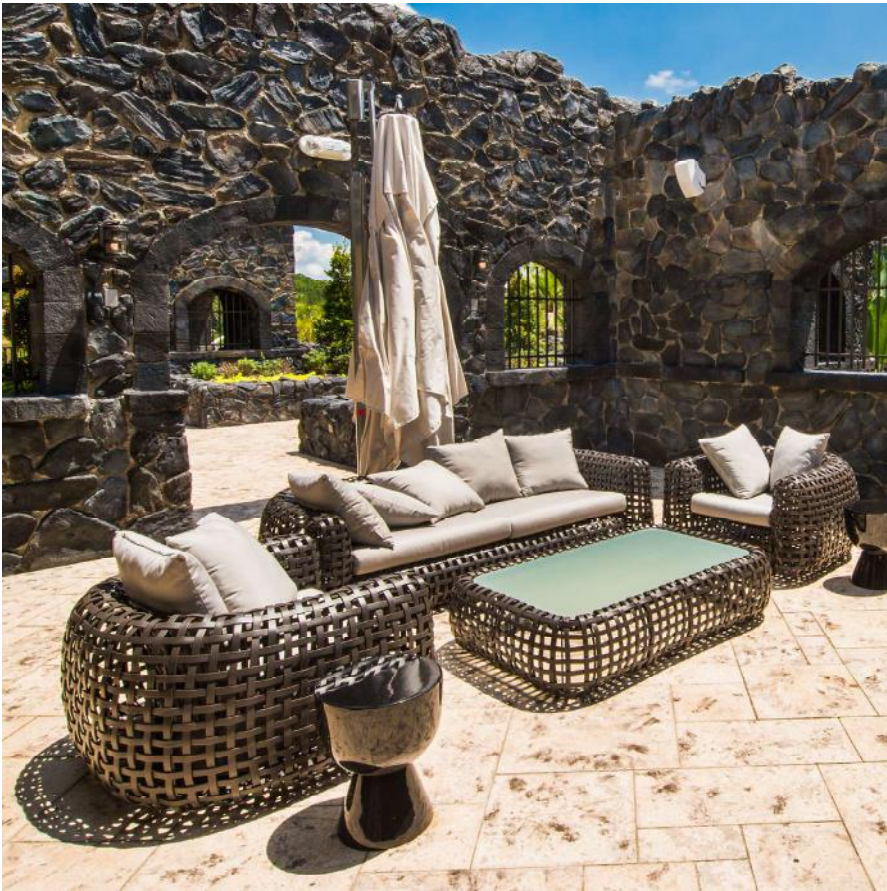
4 PIECE ASHLAR PATTERN



Coverage Area		
36P -	(35-5/8" x 23-5/8" Paver)	= 33% Coverage
24P -	(23-5/8" x 23-5/8" Paver)	= 44% Coverage
2412P -	(23-5/8" x 11-5/8" Paver)	= 12% Coverage
12P -	(11-5/8" x 11-5/8" Paver)	= 11% Coverage

DC Kerckhoff Company offers a five size and a four size Ashlar Pattern paver. Our Four Seasons Five Size Ashlar Paver Layout (pictured opposite page) and our Four Size French Pattern Ashlar Paver Layout.

We can assist you with a layout that works best for your site and offer free budgeting for owners and designers.

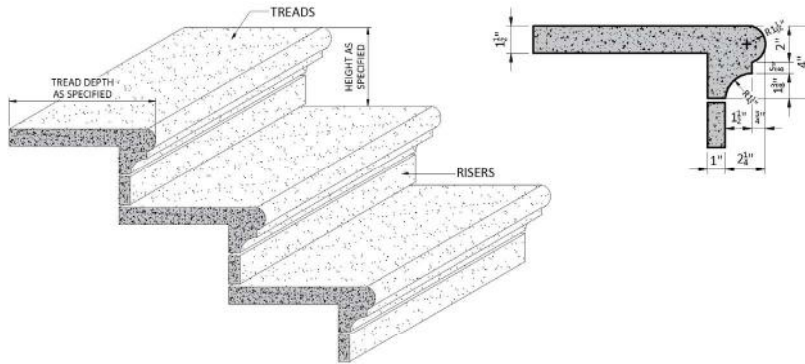




Stonecast Pavers and Treads

Treads and Risers

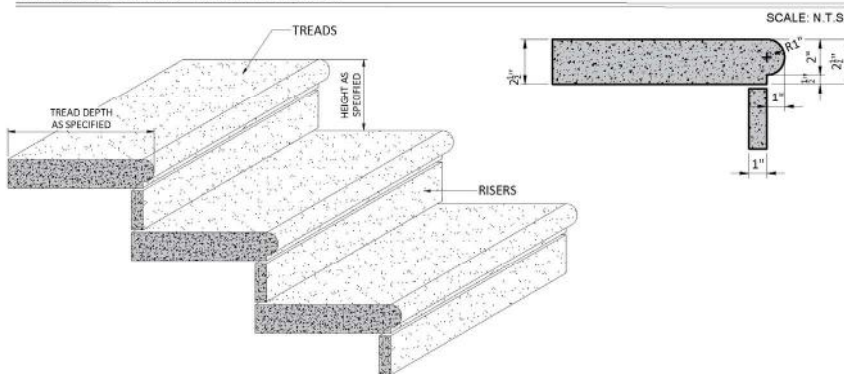
TRADITIONAL TREADS AND RISERS



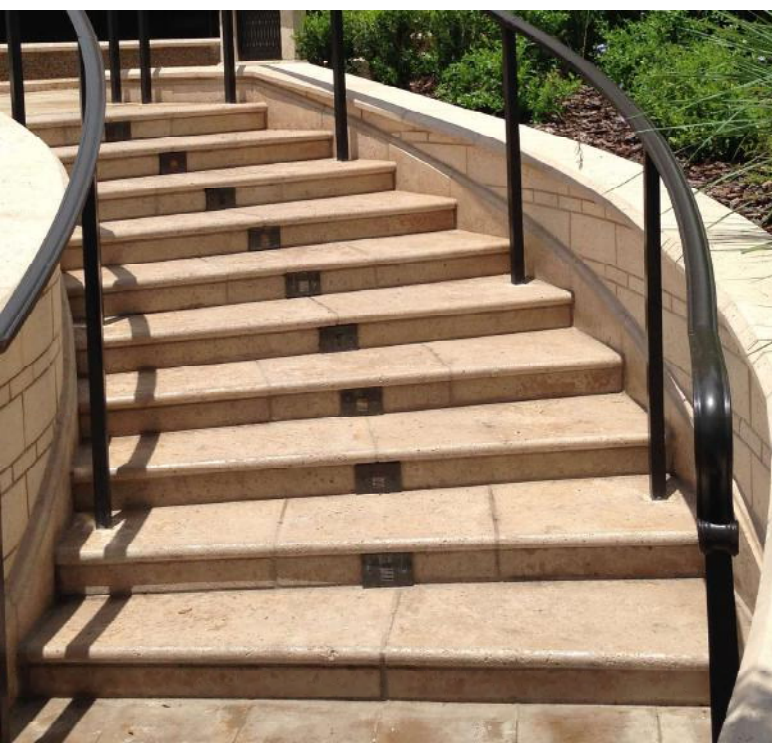
Complement your Kerckhoffstone Stonecast Paver area with Stair Treads and risers.

These can form a lovely contrasting colored border, or highlight a change in elevation in multiple decks. We offer many styles from traditional bullnose treads to modern chamfered and square edge treads. All our treads and risers are available in any of our colors and either our acid wash or keystone textures to assure slip resistance.

EMBASSY STAIR TREAD & RISER



2" BULLNOSE STAIR TREAD & RISER

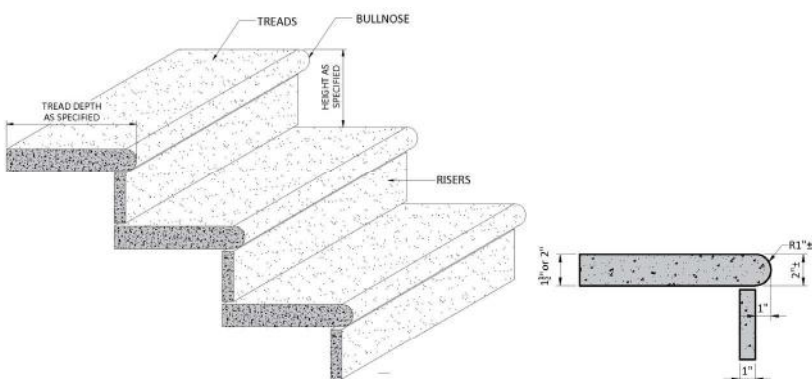


Stonecast Pavers and Treads

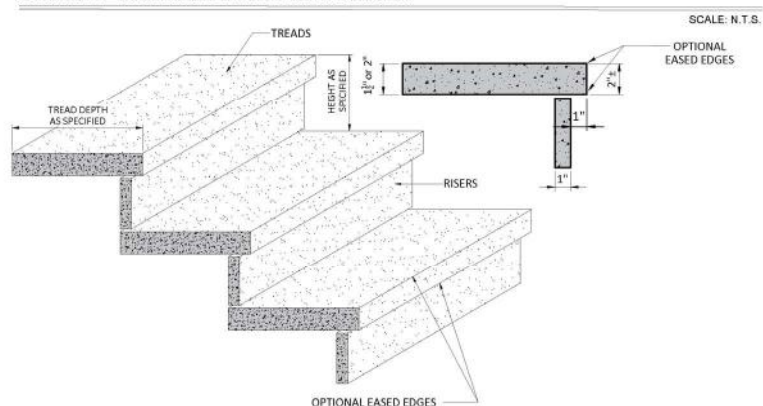
Modern Treads and Risers



MODERN TREADS AND RISERS



STRAIGHT BULLNOSE STAIR TREAD & RISER



STRAIGHT SQUARE EDGE STAIR TREAD & RISER

SCALE: N.T.S.

Kerckhoffstone treads can be cast with insets on the underside leading edge to accept LED strip lighting for a dramatic entrance to your building or to illuminate a walkway. Treads can be cast with integral risers for a modern look as well.





Stonecast Pavers and Treads

Installation

Precast Keystone Kerckhoff Stone Pavers® ***Design Standard 6,500 P.S.I.***

Manufactured by D.C. Kerckhoff Company, 1901 Elsa Street, Naples, Florida, this interior and exterior floor and deck system is available in nominal sizes from 12" squares up to 24" squares, and custom sizes or patterns to meet the requirements of the designer. Design standard is 6,500 P.S.I., in 28 days; and copies of all testing, including freeze thaw, are available upon request.

Installation on a Slab: This floor and deck system should be laid in a minimum 1" deep mortar bed over the slab. The mortar bed should be full. No pads should be allowed. Wet grout may be placed into the joints so it will flow to the bottom of the joint and completely fill the space. Care must be taken not to allow this wet grout to spill onto the surface of the material. The use of dry grout causes bridging and voids unless the grout is worked into the bottom of the joint. Grout joints are very important and it is recommended to use a tooled joint, either flushed or recessed. Kerckhoff Stone Pavers® may be set tight together, or to the design size of 3/8". The architect or owner, in advance of the installation, should establish the type of finish for the grout joint.

Installation on Sand: The exterior deck system may be set on a 2" well compacted bed of sand. Compacting of sand is very important as settling could later occur. The perimeter of the Kerckhoff Stone Pavers® should be set on mortar to prevent erosion, unless otherwise contained. Setting should be tight together or with a maximum of 1/8" space between them. These joints may be filled with fine white sand after installation.

Exposed Edges and Steps: The exposed edges, when specified, can be textured to match the face. These exposed edges can be simple square, bull nose, elaborate, standard or custom shapes. Step details can be with or without risers.

Cleaning and Sealing: The contractor must be very careful to keep the grout off the face of the Kerckhoff Stone Pavers® and especially out of the texture. Wet sponging will work the grout into the product and spoil the finished texture. If spillage occurs, allow the grout to come to initial set and brush off with a non-metallic stiff brush. Sealing is optional. If sealing is specified, care must be taken in the selection and application of the sealer. In all cases samples must be submitted and approved before application to the installed material.

Floor and Deck Protection: After the completed installation is grouted, cleaned and sealed (if required), this finished floor must be protected from all other trades. A non-smearing, non-absorbent building paper or visqueen should be used.

Stonecast Pavers and Treads

Available Finishes / Textures



All DC Kerckhoff Colors are available in all finishes with the exception of our Smooth finish which is only available in our Lightest White and Buff colors.

Regular and Light Keystone Texture are our Standard textures.

Smooth and Acid wash are Premium textures.

BlueStone, CoralStone, ChiselStone and Slate are Premium Custom textures.

All colors are cast integrally into the full thickness of the concrete. All Cast Stone is a minimum 6500 Psi concrete at 28 days.

DC Kerckhoff offers 85 colors in four standard finishes and 6 specialty finishes creating almost endless possibilities for your project. Consider mixing several finishes using the same color of several colors using the same finish to add pop to your borders or patterns. We offer free 6" x 6" sample tiles upon request.



077
Elco Smooth



077
Elco Acid Wash



077
Elco Light



077
Elco Regular



Bluestone
Finish



Coralstone
Finish



Slate
Finish



Chiselstone
Finish



Stonecast Pavers and Treads

Available Colors



001
White Regular



029
Longport
Regular



044
Bristol Regular



003
Champion
Regular



077
Elco Regular



037
Miami Regular



034
Palmer Buff
Light



039
Cay Beige
Regular



0056
Rico Regular



055
Atlantis
Regular



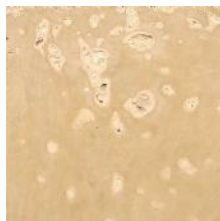
007
Villa M Light



105
Sand Pearl
Regular



030
Aruba Regular



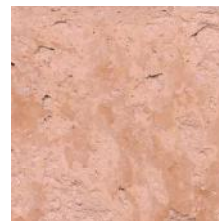
086
Bermuda
Brown Light



008
Peachy Cream
Light



047
Nassau Regular



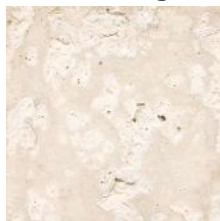
052
Roman Regular



033
Swan Regular



050
Brick Regular



054
Hunters Tan
Regular



060
Putty Regular



067
Steel Light



031
Northport
Regular



024
Lions Head
Light



026
Terra Cotta Oak
Light



011
Chocolate
Regular



011A
Dbl Chocolate



115
Grey Granite
Regular



122
Italia Regular



005
Matrix Regular

Stonecast Pavers and Treads

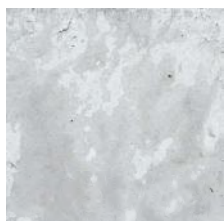
Available Colors



063
Charcoal
Regular



064
Smoke
Regular



022
Dolphin Light



016
Tarpon Light



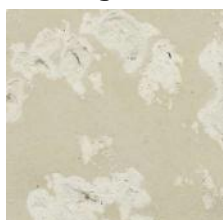
095
5Points Grey
Regular



085
Marco Regular



073
Lutgert Dark
Regular



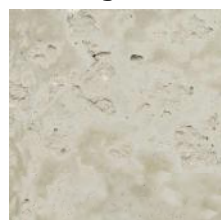
035
Lyford Regular



004
Ritz Regular



059
Bailey Regular



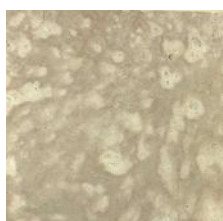
036
Edison Regular



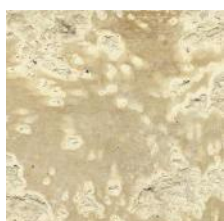
014
Latte Regular



092
Orchid Regular



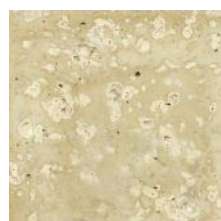
069
Paradox Light



010A
Dbl Cappuccino
Regular



010
Cappuccino
Regular



028
Paradise Light



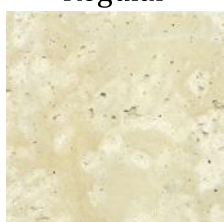
032
Fiddlesticks
Regular



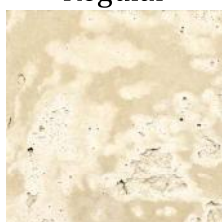
118
Golden Yellow
Regular



040
Plaza Light



023
Enclave Light



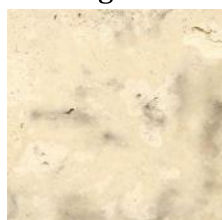
091
Frenchstone
Regular



053
Hideaway
Regular



019
Riscorp
Regular



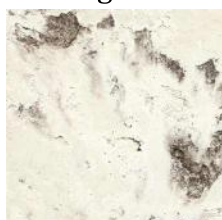
112
Old San Juan
Light



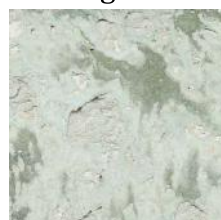
113
Antique Gold
Light



002
Isleworth
Regular



045
Brickell
Regular



048
Brockway Green
Regular



089
Watermark
Regular



© D.C. Kerckhoff Company
www.kerckhoffstone.com

1901 Elsa Street, Naples, Florida, 34109
Tel: (239) 597-7218 | Fax: (239) 566-8432